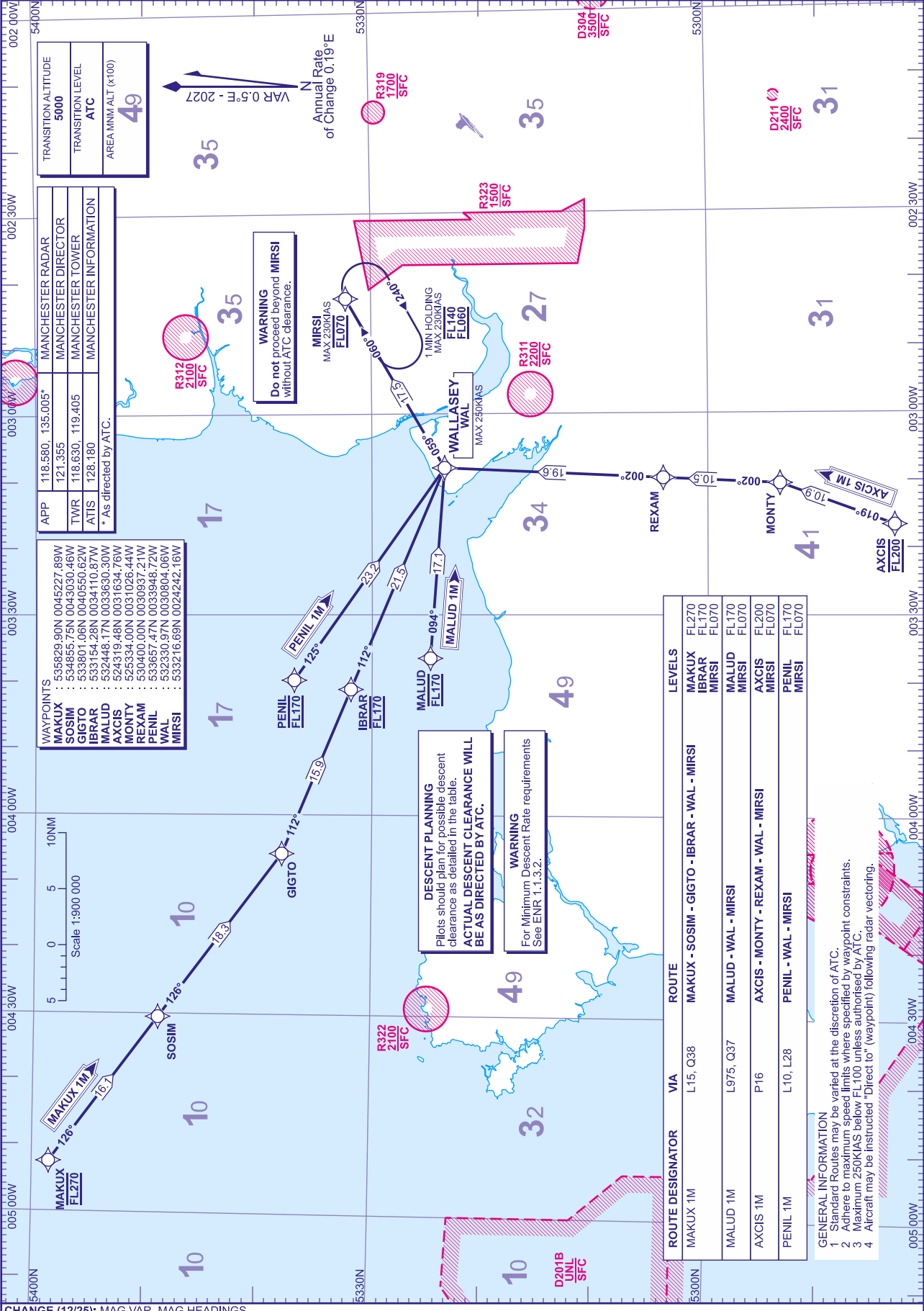


RNAV1 (DME/DME or GNSS)  
STANDARD ARRIVAL CHART -  
INSTRUMENT (STAR) - ICAO

DISTANCES IN NAUTICAL MILES  
TRACKS ARE MAGNETIC  
ALTITUDES AND ELEVATIONS ARE IN FEET

MANCHESTER  
MAKUX 1M MALUD 1M  
AXCIS 1M PENIL 1M



TRANSITION ALTITUDE	5000
TRANSITION LEVEL	ATC
AREA MNM ALT (x100)	49

APP	118.580, 135.005*	MANCHESTER RADAR
TWR	121.355	MANCHESTER DIRECTOR
ATIS	118.630, 119.405	MANCHESTER TOWER
	128.180	MANCHESTER INFORMATION

\* As directed by ATC.

WAYPOINTS	535829.90N 0045227.89W	MAKUX
	534855.75N 0043030.46W	SOSIM
	533801.06N 0040550.62W	GIGTO
	533154.28N 0034110.87W	IBRAR
	532448.17N 0033630.30W	MALUD
	524319.48N 0031634.76W	AXCIS
	525334.00N 0031026.44W	MONTY
	530400.00N 0030937.21W	REXAM
	533657.47N 0033948.72W	PENIL
	532330.97N 0030804.06W	WAL
	533216.69N 0024242.16W	MIRSI

**DESCENT PLANNING**  
Pilots should plan for possible descent clearance as detailed in the table.  
**ACTUAL DESCENT CLEARANCE WILL BE AS DIRECTED BY ATC.**

**WARNING**  
For Minimum Descent Rate requirements  
See ENR 1.1.3.2.

ROUTE DESIGNATOR	VIA	ROUTE	LEVELS
MAKUX 1M	L15, Q38	MAKUX - SOSIM - GIGTO - IBRAR - WAL - MIRSI	MAKUX FL270 IBRAR FL170 MIRSI FL070
MALUD 1M	L975, Q37	MALUD - WAL - MIRSI	MALUD FL170 MIRSI FL070
AXCIS 1M	P16	AXCIS - MONTY - REXAM - WAL - MIRSI	AXCIS FL200 MIRSI FL070
PENIL 1M	L10, L28	PENIL - WAL - MIRSI	PENIL FL170 MIRSI FL070

- GENERAL INFORMATION**
- Standard Routes may be varied at the discretion of ATC.
  - Adhere to maximum speed limits where specified by waypoint constraints.
  - Maximum 230KIAS below FL100 unless authorised by ATC.
  - Aircraft may be instructed 'Direct to' (waypoint) following radar vectoring.